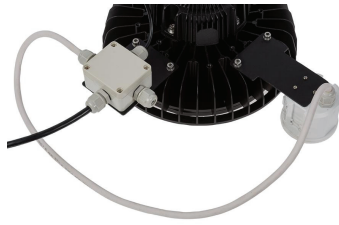


# UF Model

## Round HighBay Lighting LED 100W Luminaire -dimmable (1-10VDC)



The UF100 LED luminaire has a clean design for easy installation. It is ideal for high bay lighting with high lighting quality, energy efficiency and almost no maintenance design. The cellular effects thermal management system provides wide surface area to allow speedy heat dissipation. Premium quality and performance Meanwell dimmable power supply is reliable to drive LED arrays. Overall high quality design is to ensure long life span of the product.

### Product Specifications

#### FEATURES & BENEFITS:

- Clean and low profile design for easy installation.
- Direct replacement of 250 W+ HID fixture.
- Excellent luminaire efficacy provides significant energy saving.
- Three in one dimming functions(Optional): 1-10VDC, PWM and resistance.
- Rated Life : 50,000 hours
- Available in 4000K or 5000K color temperature.
- RoHS Compliant - Mercury free and Lead free

#### Photometric Specifications

**Lumen Output :** 14,000 lumens  
**CRI:** Ra>75  
**CCT:** 4000K & 5000K  
**Beam Angles:** 120 degree beam angle

#### Electrical System:

All electrical components are UL certified.  
**Input Voltage:** 90-305VAC , 50/60 Hz; 277-480VAC  
**Power Consumption:** 100W  
**Power Factor (PF):** >0.95

#### Mechanical Specifications

**IP & IK Rating :** IP65  
**Tested Life Time :** 50,000 hours-L70 @25C  
**Heat Sink:** Aluminum alloy  
**Lens Material :** Polycarbonates (PC)  
**Operating Temperature:** -40 F to 122 F (-40 to 50 C)  
**Fixture Dimension:** 13" Dia x 7.1" H  
**Fixture Weight:** 10.17 lb

#### Warranty

Five-year limited warranty.



#### Ordering Information

Example: **UF100A5K120DHD2**

Model Number	Output Wattage	Voltage	Color Temp	Beam Angle	Fixture Color	Mounting	Additional
<b>UF</b>	<b>100</b>	<b>A</b>	<b>5K</b>	<b>120</b>	<b>D</b>	<b>H</b>	<b>D2</b>
	<b>100 - 100W</b>	<b>A - 120-277VAC B - 277-480VAC</b>	<b>4K - 4000K 5K - 5000K</b>	<b>120 - 120 degree</b>	<b>D - Dark Bronze S - Silver</b>	<b>H - Aircraft Cable P - Pendant</b>	<b>D0 - Nothing D2 - Motion Sensor</b>

**Note:** Specifications subject to change without notice. Actual performance may differ as a result of end user environment and application.